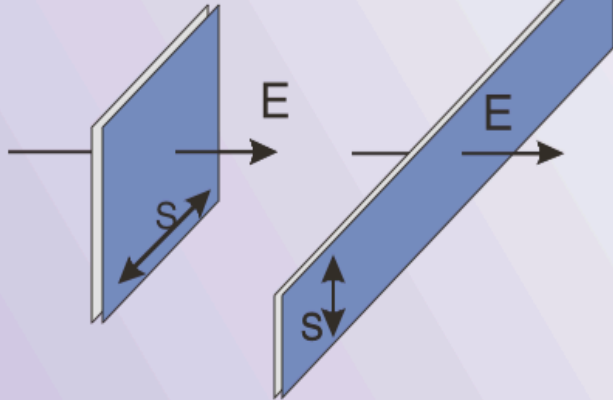
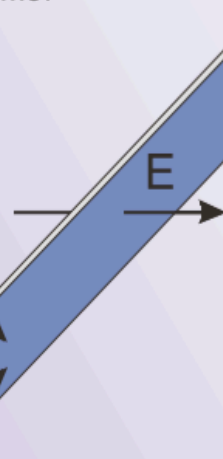


ISR Target Sensitivity Guidelines

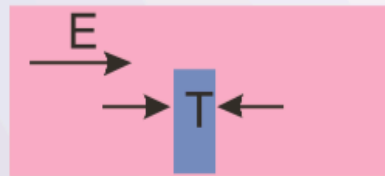
1) 3-D Resistive Barrier
(Depth < 2s)



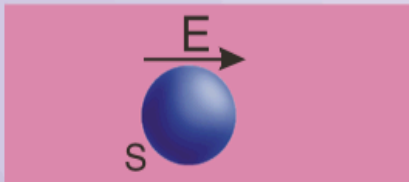
2) 2-D Resistive Barrier
(Depth < 4s)



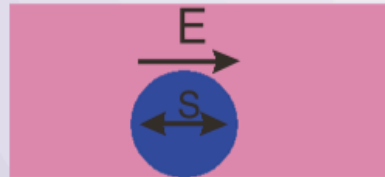
3) Thick Conductive Zone
(Depth < T/2)



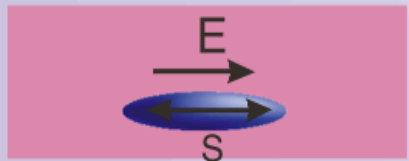
4) 3-D High Contrast Conductor or Resistor
(Depth < 2s)



5) 2-D High Contrast Conductor or Resistor
(Depth < 4s)



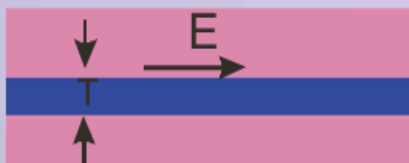
6) 3-D Conductive Lens
(Horizontal, Depth < 2s)



7) 2-D Conductive Lens
(Horizontal, Depth < 4s)



8) Thick film layer resistivity
(Depth < 2T)



9) Vertical Conductive Lens
(Depth < 2s)

